



 : 400 658 8656

Sincerely invite home and aboard distributors to visit our factory

锐尔科技(徐州)有限公司  
RUR Technology (Xuzhou) Co., Ltd

厂址: 中国江苏省邳州市碾庄镇工业园区

Add.: Industrial Park, Nianzhuang Town, Pizhou City, Jiangsu Province, China

电话/Tel: 0086-516-86831555/86830111

传真/Fax: 0086-516-86532808

E-mail: info@rurtools.com

Web: www.rurtools.com



阿里巴巴采购平台



官方网站



# 锐尔工具

—— 锐意进取 与尔共进 ——  
*Forge ahead together with you*



锐尔科技(徐州)有限公司  
RUR Technology (Xuzhou) Co., Ltd

2023版



# 公司简介

## COMPANY PROFILE

徐州锐尔五金工具制造有限公司（以下简称锐尔五金）是全国知名的五金工具规模制造商之一，创建于 2005 年，秉承“科技成就锐尔，卓越造就品质”先进理念，专注于生产精密五金工具并提供五金工具解决方案。

锐尔五金总部设在中国江苏徐州碾庄工业园，工厂占地 60 亩，主要生产断线钳、电缆剪、钢丝绳剪、航空剪、管子钳、快速管钳、水泵钳、铁皮剪、管子割刀等各种剪切类、夹持类工具，传承近 20 年五金工具制造经验，是市重点标杆企业，国家高新技术企业，中国五金制品工具协会副会长单位。

锐尔五金集五金工具设计、研发、生产、销售和服务为一体。引进了国内外先进的数控及自动化生产设备和管理理念，每年生产五金工具超 1 千万件。运用先进的制造技术，自动化的生产线、高精度的检验系统设备，以及严格的产品工艺制造流程，锐尔五金为您提供了高质量的产品。产品研发事业部强大的创新能力，也是锐尔五金引领五金工具行业的核心竞争力。

同时，锐尔五金拥有多个自主品牌，涵盖“锐尔”“雷特”“格普锐”“工匠客”，拓展产品链形成了庞大的全球研发制造、营销和服务网络。旗下子公司包括锐尔科技（徐州）有限公司、徐州格普锐五金有限公司。

锐尔五金自成立至今始终坚持以铸五金工具精品为责任，以树百年企业为目标，以融中国智慧普世界。凭专业和实力在行动，助全球五金工具事业蓬勃发展！

Xuzhou RUR Tools Making Co., Ltd.(hereinafter referred to as RUR Tools) is one of the well-known manufacturers of hardware tools in China. Founded in 2005, Xuzhou RUR Tools Making Co., Ltd. adheres to the advanced concept of "Technology Achieves RUR, Excellence Creates Quality", focusing on the production of precision hardware tools and providing hardware tool solutions.

RUR Tools is headquartered in Industrial Park, Nianzhuang Town, Pizhou city, Jiangsu Province, China, with a factory area of 40000 Square meters. It mainly produces all kinds of cutting and clamping tools such as bolt cutters, cable cutters, wire rope cutters, aviation snips, pipe wrenches, heavy duty pipe wrenches, water pump pliers, tinman's snips, pipe cutters, etc., inheriting nearly 20 years' experience in manufacturing hardware tools. It is a key benchmarking enterprise in the city, a national high-tech enterprise, and a vice-president unit of China Hardware Tools Association.

RUR Tools integrates hardware tools design, research and development, production, sales and service. With the introduction of advanced CNC and automatic production equipment and management concepts from home and abroad, we produce over 10 million pieces of hardware tools every year. Using advanced manufacturing technology, automated production lines, high-precision inspection system equipment, and strict product process manufacturing procedures, RUR Tools provides customers with high-quality products. The strong innovation capability of the product development division is also the core competitiveness of RUR Tools in leading the hardware tool industry.

RUR Tools has a number of independent brands, covering "RUR", "LEAD", "Gepurui" and "GJK", expanding the product chain to form a huge global R&D, marketing and service network, covering companies including Xuzhou RUR Tools Making Co., Ltd, which is committed to manufacturing hardware tools; RUR Technology (Xuzhou) Co., Ltd., focusing on brand development; Xuzhou Gepurui Hardware Co., Ltd. focuses on international trade business.

Since its establishment, RUR Tools has always adhered to the responsibility of casting fine hardware tools, aiming at building a century-old enterprise, so as to integrate Chinese wisdom and popularize the world. Acting with professionalism and strength, helping the global hardware tool industry to flourish!



中国手动工具领军企业

## 企业经营理念

### Business philosophy

创造超越客户期望的价值  
尊重、信赖、成就员工  
整合资源、互利多赢  
科技成就锐尔，卓越造就品质！

Business Philosophy:  
Exceed Customer's Expectations  
Respect, Trust and Achieve the Staff  
Integrate Resources to Get Win-win  
Technology Achieves RUR, Excellence Creates Quality



## 企业使命

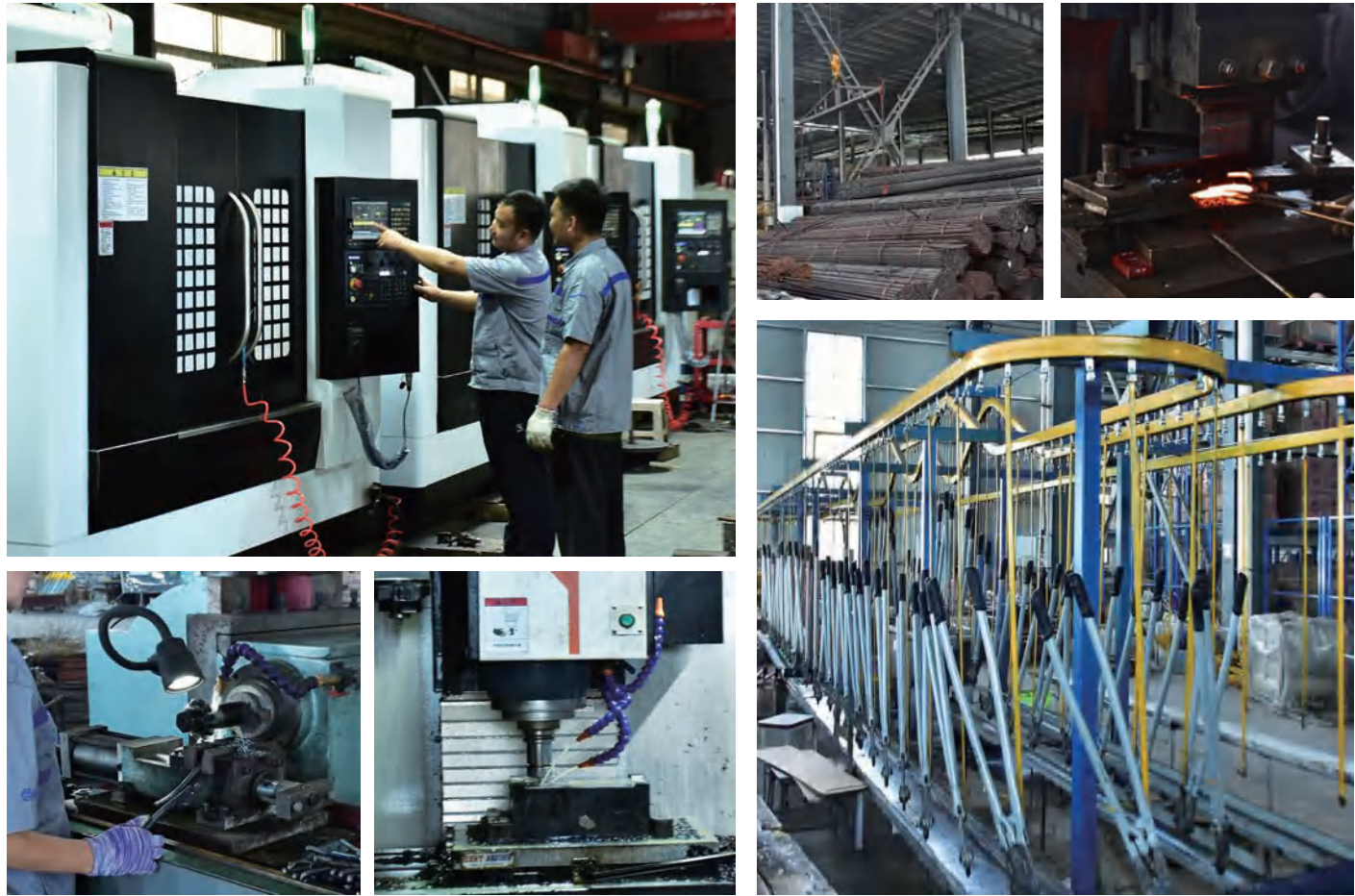
### Our Mission

凭专业和实力在行动，  
助全球五金工具事业蓬勃发展！

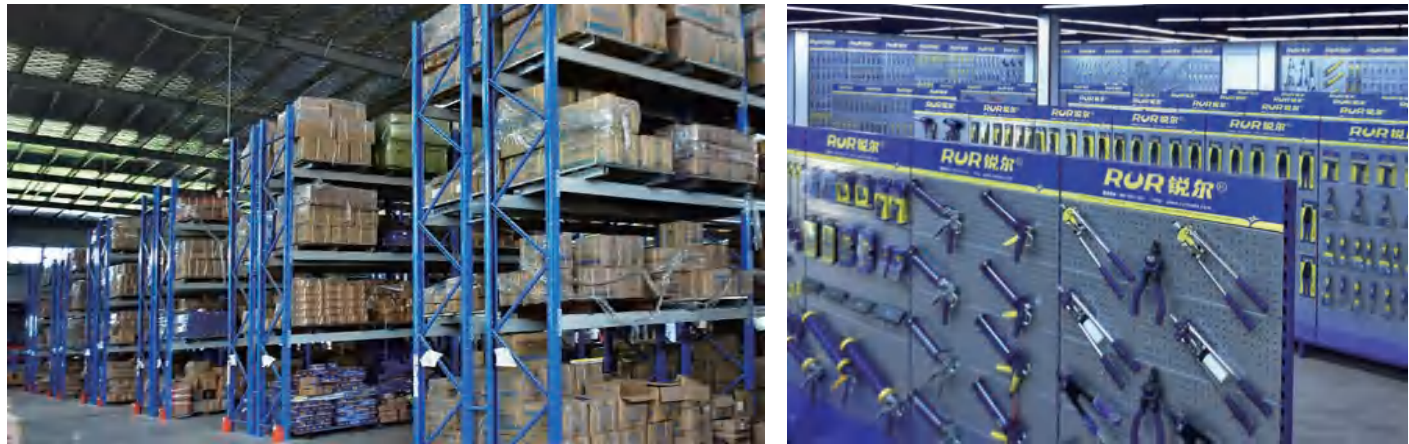
Acting with professionalism and strength, helping the global hardware tool industry to flourish!







锐意进取 与你共进  
Forge ahead together with you

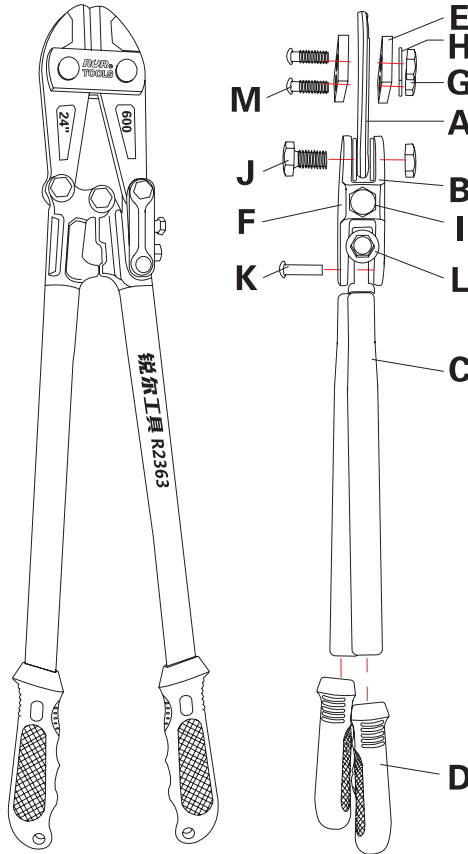


卓越成就品质  
Excellence Creates Quality



以诚信赢得市场 以质量铸造品牌  
Integrity wins the market, quality creates brand





A		刀片(BLADE)
B		连臂(LINK ARM)
C		管(TUBE)
D		手柄(HAND)
E		压板(SCREW COVER)
F		活连臂(CONNECTION)
G		螺母(NUTS)
H		垫片(WASHER)
I		调节螺栓 (BOLT)
J		连接螺栓 (BOLT)
K		铆钉(RIVET)
L		紧固螺栓 (BOLT)
M		钳头螺栓 (BOLT)

刃口特殊工艺淬火，剪切超强，硬度高，防止崩刃及卷刃

钳头优质工具钢或铬钒钢精工锻造而成，整体热处理，性能稳定，经久耐用

锻压连臂

连臂一侧螺栓调节间隙

优质橡胶把套，防滑舒适



铬钼钢断线钳 Cr-Mo Bolt Cutter

刀头采用铬钼钢锻压,锻压连臂,坚固耐用。整体热处理,刃口高频感应淬火。刃口硬度58-62HRC,连臂一侧螺栓调节刃口间隙,剪切硬度≤30HRC。手柄符合人体工程学设计,配置优质橡胶把套,表面网纹设计,造型美观,握感舒适。

The bolt cutters blade adopts chrome-molybdenum steel, the blade and link arm treat by forging, more durable; Overall treatment; High frequency induction hardening of cutting edge; The edge hardness is 58-62 HRC, the bolt on the link arm side is used to adjust the edge clearance, cutting ability ≤ 30HRC; The handle is ergonomically designed,equipped with high-quality rubber handle cover,the surface mesh design, beautiful appearance, comfortable grip.

Item Code	Size	Soft materials	Medium materials	Measurement (cm)	PCS	PCS	Kg
R2390	12"/300mm	Φ5(mm)	Φ4(mm)	32×32.5×29.5	1	30	22/23
R2391	14"/350mm	Φ7(mm)	Φ5(mm)	38×35.5×29.5	1	30	27/28
R2392	18"/450mm	Φ8(mm)	Φ6(mm)	47.5×27.5×32.5	1	20	29.3/30.3
R2393	24"/600mm	Φ10(mm)	Φ8(mm)	63.5×31.5×17	1	10	23.3/24.3
R2394	30"/750mm	Φ13(mm)	Φ10(mm)	78.5×17×19.5	1	5	19/20
R2395	36"/900mm	Φ16(mm)	Φ12(mm)	93×18.5×20.5	1	5	26/27
R2396	42"/1050mm	Φ19(mm)	Φ14(mm)	108×23.5×13	1	3	23.9/24.9
R2397	48"/1200mm	Φ22(mm)	Φ16(mm)	121×23.5×13.5	1	3	25.4/26.4

断线钳 Bolt Cutter

钳头采用优质合金钢精工锻造,整体热处理,使用寿命更长久。刀头表面可以用发黑、磷化等方式处理。刃刃经高频感应淬火处理,硬度可达56-60HRC,剪切硬度≤30HRC。钳口通过活连臂螺栓调节,操作方便,灵活省力。手柄符合人体工程学设计,配置优质橡胶把套,造型美观,握感舒适。The bolt cutters blade are forged with high-quality alloy steel, overall heat treatment, longer service life; The surface of the bolt cutter blade can be treated with blackening, phosphating, etc.; Edge by high frequency induction quenching treatment,hardness of 56-60HRC,Cutting ability ≤30HRC; The jaws are adjusted by the connection bolt, which is easy to operate, flexible and labor-saving; The handle is ergonomically designed,equipped with high-quality rubber handle cover, beautiful appearance, comfortable grip.

Item Code	Size	Soft materials	Medium materials	Measurement (cm)	PCS	PCS	Kg
R2360	12"/300mm	Φ5(mm)	Φ4(mm)	32×32.5×29.5	1	30	23.8-24.8
R2361	14"/350mm	Φ7(mm)	Φ5(mm)	38×35.5×29.5	1	30	26.8/27.8
R2362	18"/450mm	Φ8(mm)	Φ6(mm)	47.5×27.5×32.5	1	20	31.2/32.2
R2363	24"/600mm	Φ10(mm)	Φ8(mm)	63.5×31.5×17	1	10	24/25
R2364	30"/750mm	Φ13(mm)	Φ10(mm)	78.5×17×19.5	1	5	19.5/20.5
R2365	36"/900mm	Φ16(mm)	Φ12(mm)	93×18.5×20.5	1	5	26/27
R2366	42"/1050mm	Φ19(mm)	Φ14(mm)	108×23.5×13	1	3	23.8/24.8
R2367	48"/1200mm	Φ22(mm)	Φ16(mm)	121×23.5×13.5	1	3	25/26

断线钳 Bolt Cutter

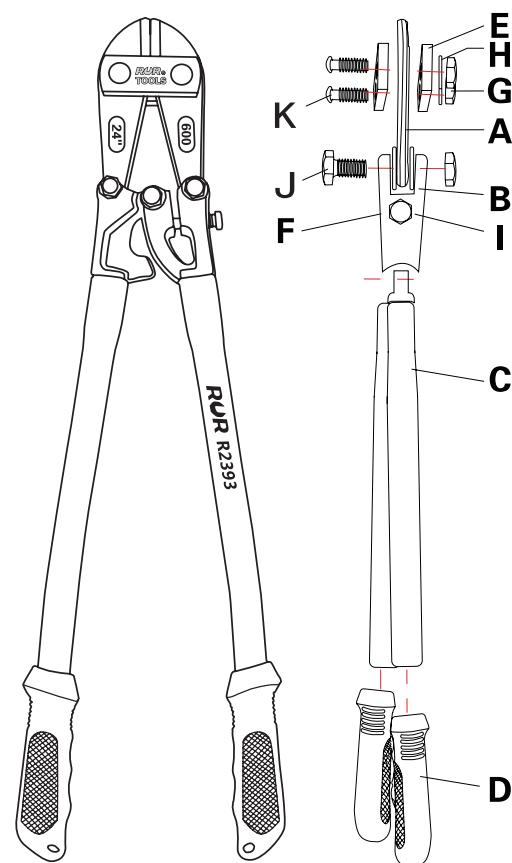
钳头采用优质合金钢精工锻造,整体热处理,使用寿命更长久。刀头表面可以用发黑、磷化等方式处理。刃口经高频感应淬火处理,硬度可达56-60HRC,剪切硬度≤30HRC。钳口通过活连臂螺栓调节,操作方便,灵活省力。手柄符合人体工程学设计,配置优质橡胶把套表面网纹设计,造型美观,握感舒适。

The bolt cutters blade are forged with high-quality alloy steel,overall heat treatment, longer service life; The surface of the bolt cutter blade can be treated with blackening, phosphating, etc.; Edge by high frequency induction quenching treatment,hardness of cutting edges is 56-60HRC, Cutting ability≤30HRC; The jaws are adjusted by the connection bolt, which is easy to operate, flexible and labor-saving; The handle is ergonomically designed,equipped with high-quality rubber handle cover,the surface mesh design, beautiful appearance, comfortable grip.

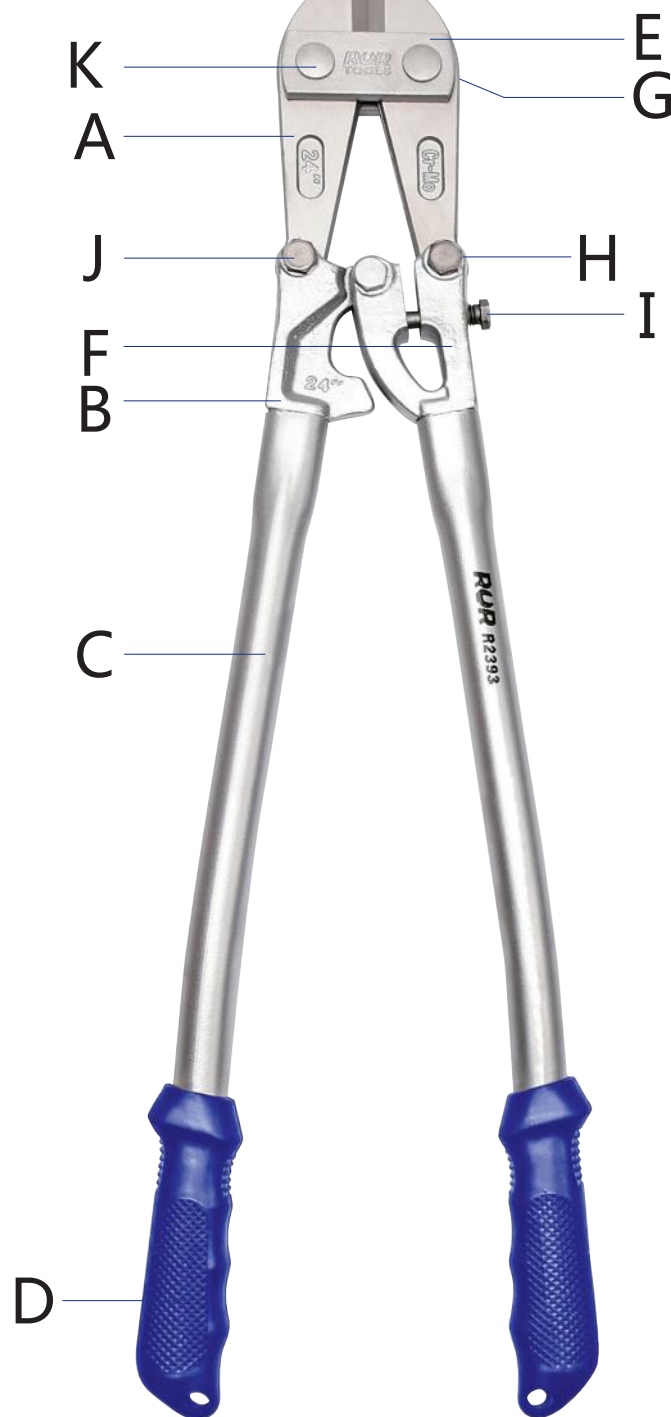
Item Code	Size	Soft materials	Medium materials	Measurement (cm)	PCS	PCS	Kg
R2360	12"/300mm	Φ5(mm)	Φ4(mm)	32×32.5×29.5	1	30	23.8-24.8
R2361	14"/350mm	Φ7(mm)	Φ5(mm)	38×35.5×29.5	1	30	26.8/27.8
R2362	18"/450mm	Φ8(mm)	Φ6(mm)	47.5×27.5×32.5	1	20	31.2/32.2
R2363	24"/600mm	Φ10(mm)	Φ8(mm)	63.5×31.5×17	1	10	24/25
R2364	30"/750mm	Φ13(mm)	Φ10(mm)	78.5×17×19.5	1	5	19.5/20.5
R2365	36"/900mm	Φ16(mm)	Φ12(mm)	93×18.5×20.5	1	5	26/27
R2366	42"/1050mm	Φ19(mm)	Φ14(mm)	108×23.5×13	1	3	23.8/24.8
R2367	48"/1200mm	Φ22(mm)	Φ16(mm)	121×23.5×13.5	1	3	25/26







A		刀片(BLADE)
B		连臂(LINK ARM)
C		管(TUBE)
D		手柄(HAND)
E		压板(SCREW COVER)
F		锻压连臂 (LINK ARM)
G		螺母(NUTS)
H		垫片(WASHER)
I		调节螺栓 (BOLT)
J		连接螺栓 (BOLT)
K		钳头螺栓 (BOLT)



### 铭钼钢断线钳 Cr-Mo Bolt Cutter

- ® 刀头采用铭钼钢锻压,锻压连臂,坚固耐用。整体热处理,刃口高频感应淬火。刃口硬度58-62HRC,连臂一侧螺栓调节刃口间隙,剪切硬度≤30HRC。手柄符合人体工学设计,配置优质橡胶把套,表面网纹设计,造型美观,握感舒适。

The bolt cutters blade adopts chrome-molybdenum steel, the blade and link arm treat by forging, more durable; Overall treatment; High frequency induction hardening of cutting edge; The cutting edge hardness is 58-62HRC, the bolt on the link arm side is used to adjust the edge clearance, cutting ability ≤ 30HRC; The handle is ergonomically designed, equipped with high-quality rubber handle cover, the surface mesh design, beautiful appearance, comfortable grip.



Item Code	Size	Soft materials	Medium materials	Measurement (cm)	PCS	PCS	kg
L2351	12"/300mm	Φ5(mm)	Φ4(mm)	32×32.5×29.5	1	30	22/23
L2352	14"/350mm	Φ7(mm)	Φ5(mm)	38×35.5×29.5	1	30	27/28
L2353	18"/450mm	Φ8(mm)	Φ6(mm)	47.5×27.5×32.5	1	20	29.3/30.3
L2354	24"/600mm	Φ10(mm)	Φ8(mm)	63.5×31.5×17	1	10	23.3/24.3
L2355	30"/750mm	Φ13(mm)	Φ10(mm)	78.5×17×19.5	1	5	19/20
L2356	36"/900mm	Φ16(mm)	Φ12(mm)	93×18.5×20.5	1	5	26/27
L2357	42"/1050mm	Φ19(mm)	Φ14(mm)	108×23.5×13	1	3	23.9/24.9
L2358	48"/1200mm	Φ22(mm)	Φ16(mm)	121×23.5×13.5	1	3	25.4/26.4

### 断线钳 Bolt Cutter

- ® 钳头采用优质合金钢精工锻造,整体热处理,使用寿命更长久。刀头表面可以用发黑、磷化等方式处理。刃口经高频感应淬火处理,硬度可达56-60HRC,剪切硬度≤30HRC。钳口通过活连臂螺栓调节,操作方便,灵活省力。手柄符合人体工学设计,配置优质橡胶把套,表面网纹设计,造型美观,握感舒适。

The bolt cutters blade are forged with high-quality alloy steel, overall heat treatment, longer service life; The surface of the bolt cutter blade can be treated with blackening, phosphating, etc. Edge by high frequency induction quenching treatment, hardness of 56-60HRC, Cutting ability ≤ 30 HRC; The jaws are adjusted by the connection bolt, which is easy to operate, flexible and labor-saving; The handle is ergonomically designed, equipped with high-quality rubber handle cover, the surface mesh design, beautiful appearance, comfortable grip.



Item Code	Size	Soft materials	Medium materials	Measurement (cm)	PCS	PCS	kg
L2360	12"/300mm	Φ5(mm)	Φ4(mm)	32×32.5×29.5	1	30	23.8/24.8
L2361	14"/350mm	Φ7(mm)	Φ5(mm)	38×35.5×29.5	1	30	26.8/27.8
L2362	18"/450mm	Φ8(mm)	Φ6(mm)	47.5×27.5×32.5	1	20	31.2/32.2
L2363	24"/600mm	Φ10(mm)	Φ8(mm)	63.5×31.5×17	1	10	24/25
L2364	30"/750mm	Φ13(mm)	Φ10(mm)	78.5×17×19.5	1	5	19.5/20.5
L2365	36"/900mm	Φ16(mm)	Φ12(mm)	93×18.5×20.5	1	5	26/27
L2366	42"/1050mm	Φ19(mm)	Φ14(mm)	108×23.5×13	1	3	23.8/24.8
L2367	48"/1200mm	Φ22(mm)	Φ16(mm)	121×23.5×13.5	1	3	25/26



## 黑金刚断线钳 Bolt Cutter

- ® 钳头采用优质合金钢精工锻造,整体热处理,使用寿命更长久。  
刀头表面可以用发黑、磷化等方式处理。  
刃口经高频感应淬火处理,硬度可达56-60HRC,剪切硬度≤30HRC。  
钳口通过活连臂螺栓调节,操作方便,灵活省力。  
手柄符合人体工程学设计,配置优质橡塑把套,表面网纹设计,造型美观,握感舒适。

The bolt cutters blade are forged with high-quality alloy steel, overall heat treatment, longer service life;  
The surface of the bolt cutter blade can be treated with blackening, phosphating, etc.;  
Edge by high frequency induction quenching treatment, hardness of cutting edges is 56-60HRC, Cutting ability ≤30HRC;  
The jaws are adjusted by the connection bolt, which is easy to operate, flexible and labor-saving;  
The handle is ergonomically designed, equipped with high-quality rubber handle cover, the surface mesh design, beautiful appearance, comfortable grip.

Item Code	Size	Soft materials	Medium materials	Measurement (cm)	PCS	PCS	Kg
R2460	12"/300mm	Φ5(mm)	Φ4(mm)	34×27×38	1	30	23.8/24.8
R2461	14"/350mm	Φ7(mm)	Φ5(mm)	40×24×36	1	30	26.8/27.8
R2462	18"/450mm	Φ8(mm)	Φ6(mm)	48×29×30	1	20	31.2/32.2
R2463	24"/600mm	Φ10(mm)	Φ8(mm)	65×33×25	1	10	24/25
R2464	30"/750mm	Φ13(mm)	Φ10(mm)	80×18×25	1	5	19.5/20.5
R2465	36"/900mm	Φ16(mm)	Φ12(mm)	94×21×17	1	5	26/27
R2466	42"/1050mm	Φ19(mm)	Φ14(mm)	109×29×11	1	3	23.8/24.8



## 日式断线钳 Japanese Type Bolt Cutter

- ® 钳头采用优质合金钢精工锻造,整体热处理,使用寿命更长久。  
刀头表面可以用发黑、磷化等方式处理。  
刃口经高频感应淬火处理,硬度可达56-60HRC,剪切硬度≤30 HRC。  
钳口通过偏心螺栓调节,操作方便,灵活省力。  
手柄符合人体工程学设计,配置优质橡塑把套,表面网纹设计,造型美观,握感舒适。

The bolt cutters blade are forged with high-quality alloy steel, overall heat treatment, longer service life;  
The surface of the bolt cutter blade can be treated with blackening, phosphating, etc.;  
Edge by high frequency induction quenching treatment, hardness of cutting edges is 56-60HRC, cutting ability ≤30HRC;  
The jaws are adjusted by the connection bolt, which is easy to operate, flexible and labor-saving;  
The handle is ergonomically designed, equipped with high-quality rubber handle cover, the surface mesh design, beautiful appearance, comfortable grip.

Item Code	Size	Soft materials	Medium materials	Measurement (cm)	PCS	PCS	Kg
R2560	12"/300mm	Φ5(mm)	Φ4(mm)	34×27×38	1	30	23.8/24.8
R2561	14"/350mm	Φ7(mm)	Φ5(mm)	40×24×36	1	30	26.8/27.8
R2562	18"/450mm	Φ8(mm)	Φ6(mm)	48×29×30	1	20	31.2/32.2
R2563	24"/600mm	Φ10(mm)	Φ8(mm)	65×33×25	1	10	24/25
R2564	30"/750mm	Φ13(mm)	Φ10(mm)	80×18×25	1	5	19.5/20.5
R2565	36"/900mm	Φ16(mm)	Φ12(mm)	94×21×17	1	5	26/27
R2566	42"/1050mm	Φ19(mm)	Φ14(mm)	109×29×11	1	3	23.8/24.8



## 美式断线钳 American Type Bolt Cutter

- ® 钳头采用优质合金钢精工锻造,整体热处理,使用寿命更长久。  
刀头表面可以用发黑、磷化等方式处理。  
刃口经高频感应淬火处理,硬度可达56-60HRC,剪切硬度≤30 HRC。  
钳口通过偏心螺栓调节,操作方便,灵活省力。  
手柄符合人体工程学设计,配置优质橡塑把套,表面网纹设计,造型美观,握感舒适。

The bolt cutters blade are forged with high-quality alloy steel, overall heat treatment, longer service life;  
The surface of the bolt cutter blade can be treated with blackening, phosphating, etc.;  
Edge by high frequency induction quenching treatment, hardness of cutting edges is 56-60HRC, cutting ability ≤30HRC;  
The jaws are adjusted by the connection bolt, which is easy to operate, flexible and labor-saving;  
The handle is ergonomically designed, equipped with high-quality rubber handle cover, the surface mesh design, beautiful appearance, comfortable grip.

Item Code	Size	Soft materials	Medium materials	Measurement (cm)	PCS	PCS	Kg
R2660	12"/300mm	Φ5(mm)	Φ4(mm)	34×27×38	1	30	23.8/24.8
R2661	14"/350mm	Φ7(mm)	Φ5(mm)	40×24×36	1	30	26.8/27.8
R2662	18"/450mm	Φ8(mm)	Φ6(mm)	48×29×30	1	20	31.2/32.2
R2663	24"/600mm	Φ10(mm)	Φ8(mm)	65×33×25	1	10	24/25
R2664	30"/750mm	Φ13(mm)	Φ10(mm)	80×18×25	1	5	19.5/20.5
R2665	36"/900mm	Φ16(mm)	Φ12(mm)	94×21×17	1	5	26/27
R2666	42"/1050mm	Φ19(mm)	Φ14(mm)	109×29×11	1	3	23.8/24.8



## 铬钼钢断线钳 Cr-Mo Bolt Cutter

- ® 刀头采用铬钼钢锻压,锻压连臂,坚固耐用。整体热处理,刃口高频感应淬火。  
刃口硬度58-62HRC,连臂一侧螺栓调节刃口间隙,剪切硬度≤30HRC。  
手柄符合人体工程学设计,配置优质橡胶把套,表面网纹设计,造型美观,握感舒适。

The bolt cutters blade adopts chrome-molybdenum steel, the blade and link arm treat by forging, more durable; Overall treatment; High frequency induction hardening of cutting edge; The edge hardness is 58-62HRC, the bolt on the link arm side is used to adjust the edge clearance, cutting ability ≤ 30HRC;  
The handle is ergonomically designed, equipped with high-quality rubber handle cover, the surface mesh design, beautiful appearance, comfortable grip.

Item Code	Size	Soft materials	Medium materials	Measurement (cm)	PCS	PCS	Kg
R2260	12"/300mm	Φ5(mm)	Φ4(mm)	32×32.5×29.5	1	30	22/23
R2261	14"/350mm	Φ7(mm)	Φ5(mm)	38×35.5×29.5	1	30	27/28
R2262	18"/450mm	Φ8(mm)	Φ6(mm)	47.5×27.5×32.5	1	20	29.3/30.3
R2263	24"/600mm	Φ10(mm)	Φ8(mm)	63.5×31.5×17	1	10	23.3/24.3
R2264	30"/750mm	Φ13(mm)	Φ10(mm)	78.5×17×19.5	1	5	19/20
R2265	36"/900mm	Φ16(mm)	Φ12(mm)	93×18.5×20.5	1	5	26/27
R2266	42"/1050mm	Φ19(mm)	Φ14(mm)	108×23.5×13	1	3	23.9/24.9
R2267	48"/1200mm	Φ22(mm)	Φ16(mm)	121×23.5×13.5	1	3	25.4/26.4



## 车牌钳 License Plate Bolt Cutter

- ® 钳头采用优质合金钢精工锻造,整体热处理,使用寿命更长久。  
刀头表面可以用发黑、磷化等方式处理。  
刃口经高频感应淬火处理,硬度可达56-60HRC,剪切硬度≤30HRC。  
钳口通过活连臂螺栓调节,操作方便,灵活省力。  
手柄符合人体工程学设计,配置优质橡塑把套,表面网纹设计,造型美观,握感舒适。

The bolt cutters blade are forged with high-quality alloy steel, overall heat treatment, longer service life;  
The surface of the bolt cutter blade can be treated with blackening, phosphating, etc.  
Edge by high frequency induction quenching treatment, hardness of cutting edge 56-60HRC, Cutting ability ≤30HRC;  
The jaws are adjusted by the connection bolt, which is easy to operate, flexible and labor-saving;  
The handle is ergonomically designed, equipped with high-quality rubber handle cover, the surface mesh design, beautiful appearance, comfortable grip.

Item Code	Size	Soft materials	Medium materials	Measurement (cm)	PCS	PCS	Kg
R8888	18"/450mm	Φ8(mm)	Φ6(mm)	47.5×27.5×32.5	1	20	31.2/32.2
R8889	24"/600mm	Φ10(mm)	Φ8(mm)	63.5×31.5×17	1	10	24/25





## 铬钼钢断线钳头 Cr-Mo Bolt Cutter Head

- ④ 钳头采用优质铬钼钢精工锻造,整体热处理,刃口高频淬火,使用寿命更长久。硬度58-62HRC,剪切硬度≤30HRC。  
The bolt cutters blade are forged with high-quality chrome-molybdenum steel, overall heat treatment, edge by high frequency induction quenching treatment, hardness of cutting edges is 58-62 HRC, Cutting ability ≤30 HRC;



Item Code	Size	Measurement (cm)	PCS	PCS	Kg
R2400	18"	33×27.5×16	1	36	19/20
R2401	24"	33×27.5×16	1	20	15.4/16.4
R2402	30"	37×22×23	1	20	24.6/25.6
R2403	36"	40×25.5×14	1	12	21/22
R2404	42"	46×30×16	1	12	31/32
R2405	48"	40×22×20	1	12	31.2/32.2

## 断线钳头 Bolt Cutter Head

- ④ 钳头采用优质合金钢精工锻造,整体热处理,使用寿命更长久。刀头表面可以用发黑、磷化等方式处理。刃口经高频感应淬火处理,硬度可达56-60HRC,剪切硬度≤30HRC。  
The bolt cutters blade are forged with high-quality alloy steel, overall heat treatment, longer service life;  
The surface of the bolt cutter blade can be treated with blackening, phosphating, etc.;  
Edge by high frequency induction quenching treatment, hardness of cutting edges is 56-60HRC, Cutting ability ≤30HRC;



Item Code	Size	Measurement (cm)	PCS	PCS	Kg
R2370	18"	33×27.5×16	1	36	19/20
R2371	24"	33×27.5×16	1	20	15.4/16.4
R2372	30"	37×22×23	1	20	24.6/25.6
R2373	36"	40×25.5×14	1	12	21/22
R2374	42"	46×30×16	1	12	31/32
R2375	48"	40×22×20	1	12	31.2/32.2

## 车牌钳头 License Plate Bolt Cutters Head

- ④ 钳头采用优质合金钢精工锻造,整体热处理,使用寿命更长久。刀头表面可以用发黑、磷化等方式处理。刃口经高频感应淬火处理,硬度可达56-60HRC,剪切硬度≤30HRC。  
The bolt cutters blade are forged with high-quality alloy steel, overall heat treatment, longer service life;  
The surface of the bolt cutter blade can be treated with blackening, phosphating, etc.;  
Edge by high frequency induction quenching treatment, hardness of cutting edges is 56-60HRC, cutting ability ≤30HRC;



Item Code	Size	Measurement (cm)	PCS	PCS	Kg
R8888	18"	33×27.5×16	1	36	19/20
R8889	24"	33×27.5×16	1	20	15.4/16.4

## A型迷你断线钳 Mini Bolt Cutter Type A

- ④ 刀头采用优质CR-V铬钒钢精工锻造,坚固耐用。钳体发黑处理,刃口特殊热处理,剪切锋利,硬度可达58-62HRC。  
The bolt cutter blade is precision forged from high-quality CR-V chrome vanadium steel, which is strong and durable;  
The bolt cutters body is blackened, the cutting edge is heat treated and sharp, hardness of cutting deges is 58-62HRC.



Item Code	Size	Soft materials	Medium materials	Measurement (cm)	PCS	PCS	Kg
R2381	8"/200mm	Φ3.5(mm)	Φ2(mm)	54.5×23.5×28	12	72	23.5/24.5

## B型迷你断线钳 Mini Bolt Cutter Type B

- ④ 采用优质合金钢精工锻造,整体热处理,坚固耐用。刀头表面可以用发黑、钝化、电泳等方式处理。刃口经高频感应淬火处理,硬度可达56-60HRC。手柄符合人体工程学设计,造型美观,握感舒适,尾部配置紧锁扣,便于携带。  
The bolt cutters blade are forged with high-quality alloy steel, overall heat treatment, strong and durable.  
The surface of the cutter blade can be treated with blackening, phosphating, electrophoresis, etc.;  
Edge by high frequency induction quenching treatment, hardness of cutting deges is 56-60HRC;  
The handle is ergonomically designed, beautiful appearance, comfortable grip, and the end of handle is equipped with a locking buckle, which is easy to carry.



Item Code	Size	Soft materials	Medium materials	Measurement (cm)	PCS	PCS	Kg
R2380	8"/200mm	Φ3.5(mm)	Φ2(mm)	52×28×28	12	72	20.5/21.5

## C型迷你断线钳 Mini Bolt Cutter Type C

- ④ 采用优质合金钢精工锻造,整体热处理,坚固耐用。刀头表面可以用发黑、钝化、电泳等方式处理。刃口经高频感应淬火处理,硬度可达56-60HRC。手柄符合人体工程学设计,造型美观,握感舒适,尾部配置紧锁扣,便于携带。  
The bolt cutters blade are forged with high-quality alloy steel, overall heat treatment, strong and durable.  
The surface of the cutter blade can be treated with blackening, phosphating, electrophoresis, etc.;  
Edge by high frequency induction quenching treatment, hardness of cutting deges is 56-60HRC;  
The handle is ergonomically designed, beautiful appearance, comfortable grip, and the end of handle is equipped with a locking buckle, which is easy to carry.



Item Code	Size	Soft materials	Medium materials	Measurement (cm)	PCS	PCS	Kg
R2385	8"/200mm	Φ3.5(mm)	Φ2(mm)	52×28×28	12	72	20.5/21.5

## E型迷你断线钳 Mini Bolt Cutters Type E

- ④ 刀头采用优质CR-V铬钒钢精工锻造,坚固耐用。钳体发黑处理,刃口特殊热处理,剪切锋利,硬度可达58-62HRC。  
The cutter blade is precision forged from high-quality CR-V chrome vanadium steel, which is strong and durable;  
The bolt cutters body is blackened, the cutting edge is heat treated and sharp, hardness of cutting deges is 58-62HRC.



Item Code	Size	Soft materials	Medium materials	Measurement (cm)	PCS	PCS	Kg
R2382	8"/200mm	Φ3.5(mm)	Φ2(mm)	52×28×28	12	72	20.5/21.5



### A型迷你断线钳 Mini Bolt Cutter Type A

- 刀头采用优质CR-V铬钒钢精工锻造,坚固耐用。  
钳体发黑处理,刃口特殊热处理,剪切锋利,硬度可达58-62HRC。

The bolt cutter blade is precision forged from high-quality CR-V chrome vanadium steel, which is strong and durable;  
The bolt cutters body is blackened, the cutting edge is heat treated and sharp, hardness of cutting edges is 58-62HRC.



Item Code	Size	Soft materials	Medium materials	Measurement (cm)	PCS	PCS	Kg
R2381	8"/200mm	Φ3.5(mm)	Φ2(mm)	54.5x23.5x28	12	72	23.5/24.5

### L型迷你断线钳 Mini Bolt Cutter Type L

- 采用优质合金钢精工锻造,整体热处理,坚固耐用。  
刀头表面可以用发黑、钝化、电泳等方式处理。  
刃口经高频感应淬火处理,硬度可达56-60HRC。  
手柄符合人体工程学设计,造型美观,握感舒适,尾部配置紧锁扣,便于携带。

The bolt cutters blade are forged with high-quality alloy steel, overall heat treatment, strong and durable.  
The surface of the bolt cutter blade can be treated with blackening, phosphating, electrophoresis, etc.;  
Edge by high frequency induction quenching treatment, hardness of cutting edges is 56-60HRC;  
The handle is ergonomically designed, beautiful appearance, comfortable grip, and the end of handle is equipped with a locking buckle, which is easy to carry.



Item Code	Size	Soft materials	Medium materials	Measurement (cm)	PCS	PCS	Kg
L2380	8"/200mm	Φ3.5(mm)	Φ2(mm)	52×28×28	12	72	23.5/24.5

### G型迷你断线钳 Mini Bolt Cutters Type G

- 刀头采用优质CR-V铬钒钢精工锻造,坚固耐用。  
钳体发黑处理,刃口特殊热处理,剪切锋利,硬度可达58-62HRC。

The cutter blade is precision forged from high-quality CR-V chrome vanadium steel, which is strong and durable;  
The bolt cutters body is blackened, the cutting edge is heat treated and sharp, hardness of cutting edges is 58-62HRC.



Item Code	Size	Soft materials	Medium materials	Measurement (cm)	PCS	PCS	Kg
G2381	8"/200mm	Φ3.5(mm)	Φ2(mm)	54.5x23.5x28	12	72	22.6/23.6

### 8寸迷你断线钳（小钢炮） 8" Mini Bolt Cutter

- 采用优质铬钒钢精工锻造,整体热处理,坚固耐用。  
刀头表面可以用发黑、钝化、电泳等方式处理,硬度可达58-62HRC。  
手柄符合人体工程学设计,造型美观,握感舒适,尾部配置紧锁扣,便于携带。

The bolt cutters blade are forged with high-quality chrome-vanadium steel, overall heat treatment, strong and durable.  
The surface of the bolt cutter blade can be treated with blackening, phosphating, electrophoresis, etc., hardness of cutting edges is 58-62HRC;  
The handle is ergonomically designed, beautiful appearance, comfortable grip, and the end of handle is equipped with a locking buckle, which is easy to carry.



Item Code	Size	Soft materials	Medium materials	Measurement (cm)	PCS	PCS	Kg
R2386	8"/200mm	Φ6.0(mm)	Φ2.6(mm)	52×28×28	12	72	25/26
R2387	9"/225mm	Φ6.0(mm)	Φ2.6(mm)	52×28×28	12	72	25/26

### 重型管子割刀 Heavy Duty Pipe Cutter

- 主体采用球铁铸造,表面喷塑处理,造型美观,坚固耐用。  
独特的刀轮销轴设计,更换刀轮更便捷。合金钢切割刀轮,剪切锋利、快速。  
加重型螺杆配有橡塑手柄,握感舒适,灵活省力。

The main body is made of ductile iron casting, the surface is sprayed, beautiful appearance, sturdy and durable.  
The unique design of the cutter wheel axis pin makes it easier to replace the cutter wheel.  
Alloy steel cutting wheel, cutting sharp and fast.  
The weighted screw is equipped with rubber handle, comfortable grip, flexible and labor-saving.



Item Code	Size	Measurement (cm)	PCS	PCS	Kg
R1000	2#	41×24×25	1	10	18.8/19.8
R1001	3#	53×17×38	1	6	20.7/21.7
R1008	2#	21×16×19	1	200	7/8
R1009	3#	21×16×19	1	100	7/8



### 美式航空剪 Aviation Snips

- ® 采用优质CR-V铬钒钢精工锻造，刃口特殊热处理，剪切锋利。最大可剪切1.25mm的冷轧铁板与0.7mm的不锈钢板。

Made of high-quality CR-V chrome-vanadium steel forged, the cutting edge is heat-treated, shear sharp;  
The maximum cutting ability is 1.25mm cold rolled steel sheet and 0.7mm stainless steel sheet.

Item Code	Size	Measurement (mm)	Measurement (cm)	PCS	PCS	Kg
R3030	10"/250mm	1.2mm	43X33X34	6	48	20/21
R3031	10"/250mm	1.2mm	43X33X34	6	48	20/21
R3032	10"/250mm	1.2mm	43X33X34	6	48	20/21



右剪



直剪



左剪



### 台式航空剪 Aviation snips

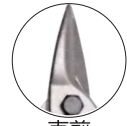
- ® 采用优质CR-V铬钒钢精工锻造，刃口特殊热处理，剪切锋利。最大可剪切1.25mm的冷轧铁板与0.7mm的不锈钢板。

Made of high-quality CR-V chrome-vanadium steel forged, the cutting edge is heat-treated, shear sharp;  
The maximum cutting ability is 1.25mm cold rolled steel sheet and 0.7mm stainless steel sheet.

Item Code	Size	Measurement (mm)	Measurement (cm)	PCS	PCS	Kg
R3033	10"/250mm	1.2mm	43X33X34	6	48	20/21
R3034	10"/250mm	1.2mm	43X33X34	6	48	20/21
R3035	10"/250mm	1.2mm	43X33X34	6	48	20/21



右剪



直剪



左剪



### 航空剪 Aviation Snips

- ® 采用优质CR-V铬钒钢精工锻造，刃口特殊热处理，剪切锋利。最大可剪切1.25mm的冷轧铁板与0.7mm的不锈钢板。

Made of high-quality CR-V chrome-vanadium steel forged, the cutting edge is heat-treated, shear sharp;  
The maximum cutting ability is 1.25mm cold rolled steel sheet and 0.7mm stainless steel sheet.

Item Code	Size	Measurement (mm)	Measurement (cm)	PCS	PCS	Kg
R3033	10"/250mm	1.2mm	43X33X34	6	48	20/21
R3034	10"/250mm	1.2mm	43X33X34	6	48	20/21
R3035	10"/250mm	1.2mm	43X33X34	6	48	20/21



右剪



直剪



左剪



### 航空剪 Aviation Snips

- ® 采用优质CR-V铬钒钢精工锻造，刃口特殊热处理，剪切锋利。最大可剪切1.25mm的冷轧铁板与0.7mm的不锈钢板。

Made of high-quality CR-V chrome-vanadium steel forged, the cutting edge is heat-treated, shear sharp;  
The maximum cutting ability is 1.25mm cold rolled steel sheet and 0.7mm stainless steel sheet.

Item Code	Size	Measurement (mm)	Measurement (cm)	PCS	PCS	Kg
R3036	10"/250mm	1.2mm	43X33X34	6	48	22.3/23.3



加长直剪



### 德式铁皮剪 Tinman's Snips Germany Type

- ® 采用优质高碳钢精工锻造，刃口感应淬火，硬度50-55HRC剪切力特强。中置弹簧，更省力、更顺手，可剪切0.5mm以下铁皮。

Made of high quality high-carbon steel forged, edge by high frequency induction quenching treatment, hardness of cutting edges is 50-55HRC, shear sharp;  
Equipped with springs, it is more labor-saving and more convenient, and it can cut ≤0.5mm steel sheets.

Item Code	Size	Measurement (cm)	PCS	PCS	Kg
R3070	8"/200mm	54.5x29x28.5	6	60	15/16
R3071	10"/250mm	42x34x31	6	60	26/27
R3072	12"/300mm	39x34x33	6	36	27/28
R3073	14"/350mm	41x33x29	6	36	28/29



### 美式铁皮剪 Tinman's Snips American Type

- ® 采用优质高碳钢精工锻造，刃口感应淬火，硬度50-55HRC剪切力特强。可剪切0.5mm以下铁皮。

Made of high quality high-carbon steel forged, edge by high frequency induction quenching treatment, hardness of cutting edges is 50-55HRC, shear sharp;  
It can cut ≤0.5mm steel sheets.

Item Code	Size	Measurement (cm)	PCS	PCS	Kg
R3075	8"/200mm	530x280x320	6	48	21/22
R3076	10"/250mm	530x360x320	6	48	24/25
R3077	12"/300mm	450x390x320	6	36	25/26





## 压接电缆剪 Crimping Cable Cutter

- ® 钳头采用优质合金钢精工锻造,整体热处理,坚固耐用。钳体表面喷砂抛光处理,防锈性能好。刃口经高频感应淬火处理,用于剪切铜芯电缆或铝芯电缆,不能剪切钢丝绳等硬拉线。手柄采用双色沾塑表面美观,握感舒适。

The cable cutters head are forged with high-quality alloy steel,overall heat treatment, durable; The surface of the cable cutters is sandblasted and polished, with good rust resistance; The cutting edge is processed by high-frequency induction hardening, which is used to cut copper-core cables or aluminum-core cables, but it cannot cut hard-drawn wires such as steel wire ropes; The handle is made of two-color dipped plastic treatment, beautiful appearance, comfortable grip.



Item Code	Size	← → (mm)	Copper Conductor Cable	Measurement (cm)	PCS	PCS	Kg
R4000	6"/150mm	160	6mm	46×26×35	10	120	22/23

## 电缆剪 Cable Cutter

- ® 钳头采用优质合金钢精工锻造,整体热处理,坚固耐用。钳体表面喷砂抛光处理,防锈性能好。刃口经高频感应淬火处理,用于剪切铜芯电缆或铝芯电缆,不能剪切钢丝绳等硬拉线。手柄采用双色沾塑表面美观,握感舒适。

The cable cutters head are forged with high-quality alloy steel,overall heat treatment, durable; The surface of the cable cutters is sandblasted and polished, with good rust resistance; The cutting edge is processed by high-frequency induction hardening, which is used to cut copper-core cables or aluminum-core cables, but it cannot cut hard-drawn wires such as steel wire ropes; The handle is made of two-color dipped plastic treatment, beautiful appearance, comfortable grip.



Item Code	Size	← → (mm)	Copper Conductor Cable	Measurement (cm)	PCS	PCS	Kg
R4001	6"/150mm	160	6mm	64.5x23x23	10	120	24.6/25.6
R4002	8"/200mm	210	7mm	61x28x16.5	6	60	21/22
R4003	10"/250mm	240	8mm	48×25×38	6	60	26/27

## 电缆剪 Cable Cutter

- ® 钳头采用优质合金钢精工锻造,整体热处理,坚固耐用。钳体表面喷砂抛光处理,防锈性能好。刃口经高频感应淬火处理,用于剪切铜芯电缆或铝芯电缆,不能剪切钢丝绳等硬拉线。手柄采用双色沾塑,表面美观,握感舒适。

The cable cutters head are forged with high-quality alloy steel,overall heat treatment, durable; The surface of the cable cutters is sandblasted and polished, with good rust resistance; The cutting edge is processed by high-frequency induction hardening, which is used to cut copper-core cables or aluminum-core cables, but it cannot cut hard-drawn wires such as steel wire ropes; The handle is ergonomically designed, beautiful appearance, comfortable grip.



Item Code	Size	Measurement (cm)	PCS	PCS	Kg
R4004	10"大头/250mm	48×25×38	6	60	27/28

## 电缆剪 Cable Cutter

- ® 钳头采用优质合金钢精工锻造,整体热处理,坚固耐用。钳体表面喷砂抛光处理,防锈性能好。刃口经高频感应淬火处理,用于剪切铜芯电缆或铝芯电缆,不能剪切钢丝绳等硬拉线。手柄采用双色套柄,表面美观,握感舒适。

The cable cutters head are forged with high-quality alloy steel,overall heat treatment, durable; The surface of the cable cutters is sandblasted and polished, with good rust resistance; The cutting edge is processed by high-frequency induction hardening, which is used to cut copper-core cables or aluminum-core cables, but it cannot cut hard-drawn wires such as steel wire ropes; The handle is ergonomically designed, equipped with high-quality rubber handle cover, beautiful appearance, comfortable grip.



Item Code	Size	Measurement (cm)	PCS	PCS	Kg
R4014	10"大头/250mm	46×25×28	6	48	28/29

## 电缆剪 Cable Cutter

- ® 钳头采用优质合金钢精工锻造,整体热处理,坚固耐用。刀头表面精磨抛光处理,防锈性能好。刃口经高频感应淬火处理,用于剪切铜芯电缆或铝芯电缆,不能剪切钢丝绳等硬拉线。手柄采用优质套柄,表面美观,握感舒适。

The cable cutters head are forged with high-quality alloy steel,overall heat treatment, durable; The surface of the cable cutters head is polished, with good rust resistance; The cutting edge is processed by high-frequency induction hardening, which is used to cut copper-core cables or aluminum-core cables, but it cannot cut hard-drawn wires such as steel wire ropes; The handle is made of high quality dipped plastic treatment, beautiful appearance, comfortable grip.



Item Code	Size	Measurement (cm)	PCS	PCS	Kg
R4010	12"/300mm	32×25×28	1	30	28/29

## 电缆剪 Cable Cutter

- ® 钳头采用优质合金钢精工锻造,整体热处理,更稳固耐用。刀头表面精磨抛光处理,防锈性能好。刃口经高频感应淬火处理,硬度可达56-60HRC。用于剪切铜芯电缆或铝芯电缆,不能剪切钢丝绳等硬拉线。手柄符合人体工程学设计,配置优质橡塑把,造型美观,握感舒适。

The cable cutters head are forged with high-quality alloy steel,overall heat treatment, durable; The surface of the cable cutters head is polished, with good rust resistance; The cutting edge is treated by high frequency induction hardening, cutting ability is 56-60HRC; It is used to cut copper-core cables or aluminum-core cables, but it cannot cut hard-drawn wires such as steel wire ropes; The handle is ergonomically designed, equipped with high-quality rubber handle cover, beautiful appearance, comfortable grip.



Item Code	Size	Measurement (cm)	PCS	PCS	Kg
R4012	14"/350mm	38x24x29	1	20	23/24

## 电缆剪 Cable Cutter

- ® 钳头采用优质合金钢精工锻造,整体热处理。刀头表面可以用发黑、精磨等方式处理。刃口经高频感应淬火处理,硬度可达56-60HRC。用于剪切铜芯电缆或铝芯电缆,不能剪切钢丝绳等硬拉线。手柄符合人体工程学设计,配置优质橡塑把套,表面网纹设计,造型美观,握感舒适。

The cable cutters head are forged with high-quality alloy steel,overall heat treatment; The surface of the cable cutter head can be treated with blackening. The cutting edge is processed by high-frequency induction hardening, the cutting ability is 56-60HRC; It is used to cut copper-core cables or aluminum-core cables, but it cannot cut hard-drawn wires such as steel wire ropes; The handle is ergonomically designed, equipped with high-quality rubber handle cover, the surface mesh design, beautiful appearance, comfortable grip.



Item Code	Size	Measurement (cm)	PCS	PCS	Kg
R4015	28"/700mm	81.5×17.5×21	1	5	12.2/13.2

## 电缆剪 Cable Cutter

- ® 钳头采用优质合金钢精工锻造,整体热处理,配置重型锻压连臂,更稳固耐用。刀头表面可以用发黑、精磨等方式处理。刃口经高频感应淬火处理,硬度可达56-60HRC。用于剪切铜芯电缆或铝芯电缆,不能剪切钢丝绳等硬拉线。手柄符合人体工程学设计,配置优质橡塑把套表面网纹设计,造型美观,握感舒适。

The cable cutters head are forged with high-quality alloy steel,overall treatment, and equipped with heavy-duty forged link arms, which are strong and durable. The surface of the cable cutter head can be treated by blackening, fine grinding, etc. The cutting edge is treated by high frequency induction hardening, the cutting ability is 56-60HRC; It is used to cut copper-core cables or aluminum-core cables, but it cannot cut hard-drawn wires such as steel wire ropes; The handle is ergonomically designed, equipped with high-quality rubber handle cover, beautiful appearance, comfortable grip.



Item Code	Size	铜铝电缆	Measurement (cm)	PCS	PCS	Kg
R4010	12"/300mm	100mm <sup>2</sup>	33×24×28	1	20	21/22
R4011	14"/350mm	130mm <sup>2</sup>	38×24×29	1	20	23/24
R4005	18"/450mm	150mm <sup>2</sup>	46×29×24	1	12	22/23
R4006	24"/600mm	240mm <sup>2</sup>	61×29×20	1	10	22/23
R4007	32"/800mm	400mm <sup>2</sup>	83×20×22	1	5	25/26
R4008	36"/900mm	450mm <sup>2</sup>	92×21×20	1	5	29/30
R4009	42"/1050mm	500mm <sup>2</sup>	106×21×28	1	4	26/27



## 电子剪 Electronic Scissors

- ® 采用不锈钢材质，钳口高频淬火处理。钳身配置12mm钢丝弹簧，高回弹力，耐用。广泛用于电子元件剪切，模型制作等。

Made of stainless alloy steel, the jaws are heat treated by high frequency quenching; The body is equipped with 12mm steel wire material spring, which is high elasticity and durable; Widely used in electronic components cutting, model making, etc.



Item Code	Size	Length (mm)	Copper Conductor Cable	Measurement (cm)	PCS	PCS	Kg
R3104	5"/125mm	160	6mm	46×26×35	10	120	22/23

## 电子剪 Electronic Scissors

- ® 采用不锈钢材质，钳口高频淬火处理。钳身配置12mm钢丝弹簧，高回弹力，耐用。广泛用于电子元件剪切，模型制作等。

Made of stainless alloy steel, the jaws are heat treated by high frequency quenching; The body is equipped with 12mm steel wire material spring, which is high elasticity and durable; Widely used in electronic components cutting, model making, etc.



Item Code	Size	Length (mm)	Copper Conductor Cable	Measurement (cm)	PCS	PCS	Kg
R3105	5"/125mm	160	6mm	46×26×35	10	120	22/23

## 白铁剪 Tinman's Snips

- ® 不锈钢精密加工，刃口特殊热处理。锁扣弹簧设计，环保橡胶手柄。

Precision machining of stainless steel, special heat treatment of the cutting edge. Environmentally friendly rubber handle with locking design.



Item Code	Size	Measurement (cm)	PCS	PCS	Kg
R3080	8" /200mm	57×28.5×30	6	72	12.5/13.5

## 白铁剪 Tinman's Snips

- ® 不锈钢精密加工，刃口特殊热处理。锁扣弹簧设计，环保橡胶手柄。

Precision machining of stainless steel, special heat treatment of the cutting edge. Environmentally friendly rubber handle with locking design.



Item Code	Size	Measurement (cm)	PCS	PCS	Kg
R3081	8" /200mm	57×28.5×30	6	72	12.5/13.5

## 直线剪 Straight Tinman's Snips

- ® 刀头铬钒钢材质，氮化刃口，刀头高强螺栓紧固件，铆钉加固剪体，沾塑手柄。适用于PVC材料、铁皮、铜片等材料。

The straight tinman's snips head is made of chrome vanadium steel, nitrided cutting edge, the straight tinman's snip head is reinforced with high-strength rivets, and equipped with high-quality dipped plastic handle; Suitable for cutting PVC materials, steel sheets, copper sheets and other materials.



Item Code	Size	Measurement (cm)	PCS	PCS	Kg
R3074	10"/250mm	530×280×320	6	48	21/22

## 多功能剪刀 Multi-functional Tinman's Snips

- ® 合金钢精密加工，经氨化处理，剪切锋利。双色手柄，握感舒适。

Made of precision-machined alloy steel, which has been treated with ammonia, cutting sharp; Two-tone handle, comfortable grip.



Item Code	Size	Measurement (cm)	PCS	PCS	Kg
R3085	8"/200mm	54×28×23.5	12	72	18.6/19.6

## 多功能剪刀 Multi-functional Tinman's Snips

- ® 合金钢精密加工，经氨化处理，剪切锋利。双色手柄，握感舒适。

Made of precision-machined alloy steel, which has been treated with ammonia, cutting sharp; Two-tone handle, comfortable grip.



Item Code	Size	Measurement (cm)	PCS	PCS	Kg
R3086	8"/200mm	54×28×23.5	12	72	18.6/19.6



迷你钢丝绳剪 Mini Wire Rope Cutter

- ® 钳头采用优质合金钢精工锻造,整体热处理,更稳固耐用。  
刀头表面可以用发黑、磷化等方式处理。  
刃口经高频感应淬火处理,硬度可达58-62HRC ,用于剪切钢丝绳。
- The wire rope cutters head are forged with high-quality alloy steel,overall heat treatment,more stable and durable;  
The surface of the wire rope cutters head can be treated with blackening, phosphating, etc;  
Edge by high frequency induction quenching treatment,hardness of cutting edges is 58-62HRC,which is used for cutting steel wire ropes;

Item Code	Size	Measurement (cm)	PCS	PCS	Kg
R4030	8"/200mm	61×26.5×19	10	60	19/20



迷你钢丝绳剪 Mini Wire Rope Cutter

- ® 钳头采用优质合金钢锻造,整体热处理,坚固耐用。  
刃口经特殊热处理,剪切快速平整,用于剪切钢丝绳。
- The wire rope cutters head are forged with high-quality alloy steel,overall heat treatment, more stable and durable;  
The edge is heat-treated, fast cutting, flat incision, and it is used for cutting wire ropes.

Item Code	Size	Measurement (cm)	PCS	PCS	Kg
R4031	8"/200mm	61×26.5×19	10	60	20/21



钢丝绳剪 Wire Rope Cutter

- ® 钳头采用优质合金钢精工锻造,整体热处理,更稳固耐用。  
刀头表面可以用发黑、磷化等方式处理。  
刃口经高频感应淬火处理,硬度可达58-62HRC ,用于剪切钢丝绳。
- The wire rope cutters head are forged with high-quality alloy steel, overall heat treatment, and equipped with heavy-duty forged link arms, more stable and durable;  
The surface of the wire rope cutters head can be treated with blackening, phosphating, etc;  
Edge by high frequency induction quenching treatment,hardness of cutting edges is 58-62HRC,which is used for cutting steel wire ropes,cable,etc.;

Item Code	Size	Measurement (mm)	Measurement (cm)	PCS	PCS	Kg
R4032	18"/450mm	Φ8	47×29×25	1	12	28/29
R4033	24"/600mm	Φ10	62×17×25	1	10	30/31
R4034	36"/900mm	Φ14	93×20×20	1	5	26/27
R4035	42"/1050mm	Φ16	107×22×22	1	4	28/29





重型管子钳 Heavy Duty Pipe Wrench

- ® 钳口采用优质碳钢锻造，整体调质，齿部高频，齿部硬度大于等于47HRC，钝化处理，球墨铸铁柄。  
The jaws are forged with high-quality carbon steel, The hardness of the teeth ≥ 47HRC, passivation treatment, ductile cast iron handle.



Item Code	Size	Measurement (cm)	PCS	PCS	Kg
R1210	8"/200mm	32×24×21.5	6	72	28/29
R1211	10"/250mm	29×25×26	6	48	30/31
R1212	12"/300mm	30×27.5×23.5	6	36	30/31
R1213	14"/350mm	36.5×30.5×18.5	6	24	29/30
R1214	18"/450mm	45×28.5×19	6	12	22/23
R1215	24"/600mm	55.5×18×23.5	5	10	29/30
R1216	36"/800mm	77×24×15	3	6	30/31
R1217	48"/1200mm	100.3×20×18	2	4	36/37

重型管子钳 Heavy Duty Pipe Wrench

- ® 钳口采用优质碳钢锻造，整体调质，齿部高频，齿部硬度大于等于47HRC，钝化处理，球墨铸铁柄。  
The jaws are forged with high-quality carbon steel, The hardness of the teeth ≥ 47HRC, passivation treatment, ductile cast iron handle.



Item Code	Size	Measurement (cm)	PCS	PCS	Kg
R1230	8"/200mm	46×20×11.5	6	48	17.5/18.5
R1231	10"/250mm	37×26.5×13.5	6	36	26.8/27.8
R1232	12"/300mm	30×27×17.5	6	24	22.8/23.8
R1233	14"/350mm	33.5×29.5×16	6	24	27.8/28.8
R1234	18"/450mm	41×21×18	4	16	29.1/30.1
R1235	24"/600mm	53×25×10.5	2	8	23/24
R1236	36"/800mm	81×14×25	1	5	27.4/28.4
R1237	48"/1200mm	108×17.8×17	1	3	24/25

重型管子钳 Heavy Duty Pipe Wrench

- ® 钳口采用优质碳钢锻造，钝化处理；齿部高频处理，特有上下咬合钳口设计保证夹持效果；钳口两侧抛光，钳体表面喷塑；球墨铸铁柄；数控车床制作滚花螺母便于调节。  
The jaws are forged with high-quality carbon steel and passivated; High-frequency treatment of teeth, special teeth design to ensure tight damping; Both sides of the teech are polished, and the surface of the jaw body is sprayed with plastic, ductile cast iron handle. The knurled nut is made by CNC machine, labor-saving.



Item Code	Size	Measurement (cm)	PCS	PCS	Kg
L1210	8"/200mm	46×20×11.5	6	48	17.5/18.5
L1211	10"/250mm	37×26.5×13.5	6	36	26.8/27.8
L1212	12"/300mm	30×27×17.5	6	24	22.8/23.8
L1213	14"/350mm	33.5×29.5×16	6	24	27.8/28.8
L1214	18"/450mm	41×21×18	4	16	29.1/30.1
L1215	24"/600mm	53×25×10.5	2	8	23/24
L1216	36"/800mm	81×14×25	1	5	27.4/28.4
L1217	48"/1200mm	108×17.8×17	1	3	24/25

铝合金管子钳 Aluminum Alloy Pipe Wrench

- ® 钳口采用优质碳钢锻造，钝化处理；齿部高频处理，特有上下咬合钳口设计保证夹持效果；钳口两侧抛光，钳体表面喷塑；高强度铝合金把柄，使用轻便；数控车床制作滚花螺母便于调节。  
The jaws are forged with high-quality carbon steel and passivated; High-frequency treatment of teeth, special teeth design to ensure tight damping; Both sides of the teech are polished, and the surface of the jaw body is sprayed with plastic; High-strength aluminum alloy handle, lightweight, convenient to use; The knurled nut is made by CNC machine, labor-saving.



Item Code	Size	Measurement (cm)	PCS	PCS	Kg
R1240	10"/250mm	37×26.5×13.5	6	36	26.8/27.8
R1241	12"/300mm	30×27×17.5	6	24	22.8/23.8
R1242	14"/350mm	33.5×29.5×16	6	24	27.8/28.8
R1243	18"/450mm	41×21×18	4	16	29.1/30.1
R1244	24"/600mm	53×25×10.5	2	8	23/24
R1245	36"/800mm	81×14×25	1	5	27.4/28.4
R1246	48"/1200mm	108×17.8×17	1	3	24/25





美式G字夹 G Clamp

- ® 夹体球墨铸铁制造，丝杆T型螺纹，强度更高。  
The clamp body is made of ductile cast iron, and the lead screw with T-shaped thread, high strength.



Item Code	Size	Measurement (cm)	PCS	PCS	Kg
R3090	2 "	33×20×23	12	72	17/18
R3091	3 "	21×19×14	6	48	22/23
R3092	4 "	22×22.5×13.5	6	36	24/25
R3093	5 "	28×26×25.5	6	24	23/24
R3094	6 "	31×29.5×13.5	6	18	21/22
R3095	8 "	38×15.5×32	3	12	19/20
R3096	10 "	41.5×24×19	2	8	18/19
R3097	12 "	45×19.5×27	2	6	19/20

90° 鹰嘴管子钳 90 Degree Swedish Pipe Wrench

- ® 优质碳钢整体锻造，齿部高频处理，钳口抛光。  
The jaws are forged with high-quality carbon steel;  
High-frequency treatment and polished teeth;

Item Code	Size	Measurement (cm)	PCS	PCS	Kg
R3239	3/4"/18.75mm	29×23×18.5	1	36	17/18
R3040	1"/25mm	32.5×26×22	1	36	21/22
R3041	1.5"/37.5mm	43.5×21.5×19	1	24	24/25
R3042	2"/50mm	57×16.8×16.5	1	12	20/21
R3043	3"/75mm	66×18.5×13.3	1	8	20/21
R3044	4"/100mm	76×21×10.5	1	6	21/22



45° 鹰嘴管子钳 45 Degree Swedish Pipe Wrench

- ® 优质碳钢整体锻造，齿部高频处理，钳口抛光。  
The jaws are forged with high-quality carbon steel;  
High-frequency treatment and polished teeth;

Item Code	Size	Measurement (cm)	PCS	PCS	Kg
R3241	1"/25mm	32.5×26×22	1	36	22/23
R3242	1.5"/37.5mm	43.5×21.5×19	1	24	24/25
R3243	2"/50mm	42×35×26	1	12	20/21



S型鹰嘴管子钳 S Type Swedish Pipe Wrench

- ® 整体锻造，分优质碳钢与铬钒钢两种，齿部高频处理。  
Overall forging, there are 2 kinds of material can be choose; High-quality carbon steel and chrome-vanadium steel; High-frequency treatment of the teeth;

Item Code	Size	Measurement (cm)	PCS	PCS	Kg
R3245	1/2"/12.5mm	30×25×18.5	1	54	22/23
R3246	1"/25mm	33×25.6×22.5	1	36	28/29
R3247	1.5"/37.5mm	43.5×27.5×21	1	24	34/35
R3248	2"/50mm	57×20×18.5	1	12	30/31
R3249	3"/75mm	67×24×11	1	6	21/22





## 快速管子钳 Auto Pipe Wrench

- ® 活动钳口采用45#钢锻造,结合加强型弹簧开合设计,两钳口齿部均高频淬火,硬度45-48HRC;  
头部可作90度角活动,适合不同角度的狭小空间作业。

The jaws are forged with 45# steel, equipped with the reinforced spring design, the jaws are high-frequency quenched, and the hardness is 45-48HRC;  
The rapid grip pipe wrench head can be moved at 90° angle, which is suitable for narrow space works.

Item Code	Size	▶◀ (mm)	Measurement (cm)	PCS	PCS	Kg
R1200	18"/450mm	45mm	49×27×21	1	20	28/29
R1201	24"/600mm	50mm	67×26×17	1	12	23/24



## 快速管子钳 Auto Pipe Wrench

- ® 活动钳口采用45#钢锻造,结合加强型弹簧开合设计,两钳口齿部均高频淬火,硬度45-48HRC;  
头部可作90度角活动,适合不同角度的狭小空间作业。

The jaws are forged with 45# steel, equipped with the reinforced spring design, the jaws are high-frequency quenched, and the hardness is 45-48HRC;  
The rapid grip pipe wrench head can be moved at 90° angle, which is suitable for narrow space works.

Item Code	Size	▶◀ (mm)	Measurement (cm)	PCS	PCS	Kg
R1200	18"/450mm	45mm	49×27×21	1	20	28/29
R1201	24"/600mm	50mm	67×26×17	1	12	23/24



## 多功能扳手 Multifunctional Wrench

- ® 产品采用高碳钢制造,整体热处理。  
精密齿纹设计,夹持强劲,不易打滑。  
表面电泳处理,不易生锈。  
尾部尖端设计,可做撬棍及尖凿。

Made of high carbon steel and overall heat treatment;  
Precise teech design, strong clamping, anti-slip;  
Surface electrophoresis treatment, with good rust resistance;  
The end parts of utility wrench can be used as crowbar and harp chisel.

Item Code	Size	Measurement (cm)	PCS	PCS	Kg
R3061	9-32mm	42×35×26	6	36	25/26



## 桌虎钳 Table Vise

- ® 钳体采用球铁精密铸造,表面静电喷涂。  
钳体可四面加工,可夹持圆件,灵活方便。

The table vise body is precision cast with ductile iron, and the surface is electrostatically sprayed;  
It can be used on four sides and can hold round parts, which is flexible and convenient.

Item Code	Size	Measurement (cm)	PCS	PCS	Kg
R1010	50mm	38×17×38	1	10	20/21
R1012	60mm	38×17×38	1	10	20/21



## 管子台钳 Hinged Pipe Vise

- ® 主体采用球铁铸造,表面喷塑处理,造型美观,坚固耐用。  
碳钢钳口齿部高频淬火处理,防滑耐用。  
加强型底座设计,可固定在工作台上,使用寿命更长。

The main body is made of ductile iron casting, the surface is sprayed with plastic, beautiful appearance, sturdy and durable;  
High-frequency quenching treatment of carbon steel teech, anti-slip and durable;  
The reinforced base design can be fixed on the workbench and has a longer service life.

Item Code	Size	Measurement (cm)	PCS	PCS	Kg
R1014	2#(10-90mm)	33×27×37	1	6	26/27
R1015	3#(15-115mm)	38×32×21	1	4	28/29
R1016	4#(15-165mm)	41×35×20	1	2	21/22



## 西班牙式台虎钳 Hinged Pipe Vise

- ® 主体采用球铁铸造,表面喷塑处理,造型美观,坚固耐用。  
碳钢钳口齿部高频淬火处理,防滑耐用。  
加强型底座设计,可固定在工作台上,使用寿命更长。

The main body is made of ductile iron casting, the surface is sprayed with plastic, beautiful appearance, sturdy and durable;  
High-frequency quenching treatment of carbon steel teech, anti-slip and durable;  
The reinforced base design can be fixed on the workbench and has a longer service life.

Item Code	Size	Measurement (cm)	PCS	PCS	Kg
R1025	1#(10-60mm)	47×21×24	1	6	24/25
R1026	2#(10-90mm)	30×28×32	1	4	24/25
R1027	3#(15-115mm)	38×30×16	1	2	18/16
R1028	4#(15-165mm)	38×32×22	1	2	26/27





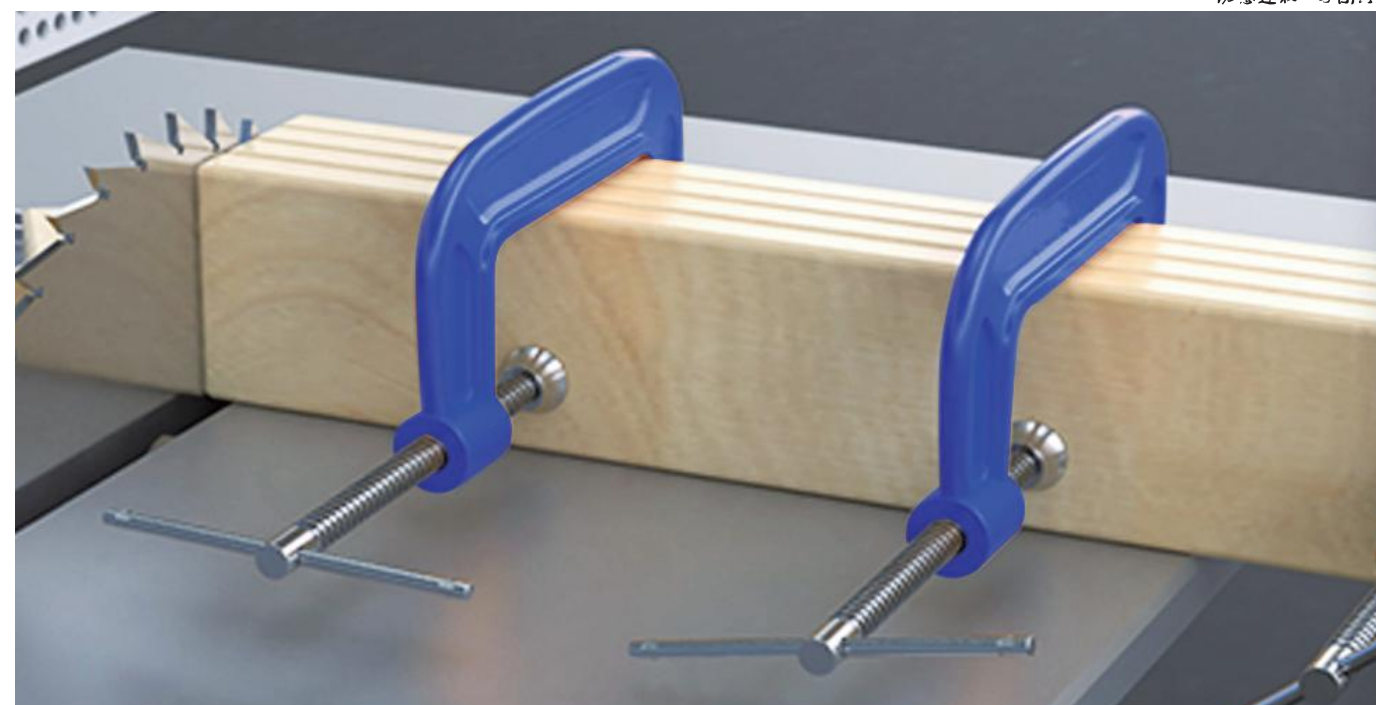


### 带脚台虎钳 Hinged Pipe Vise With Tripod

- ® 主体采用球铁铸造，表面喷塑处理，造型美观，坚固耐用。碳钢钳口齿部高频淬火处理，防滑耐用。加强型底座设计，配有重型支架，可用于野外管道施工。
- The main body is made of ductile iron casting, the surface is sprayed with plastic, beautiful appearance, sturdy and durable; High-frequency quenching treatment of carbon steel jaw, anti-slip and durable; Reinforced base design with heavy-duty brackets for outdoor plumbing construction.



Item Code	Size	Measurement (cm)	PCS	PCS	Kg
R1017	2#	46×30×22	1	2	26/27
R1017	3#	46×30×22	1	2	30/31



### 直板夹 Sash Clamp

- ® 夹块铸造，钢板优质碳钢冷拉，丝杆双头T型螺纹，调节能力强。
- Made of high-quality carbon steel, and the lead screw with T-shaped thread, easy adjustment.



Item Code	Size	Measurement (cm)	PCS	PCS	Kg
R1260	24"/600mm	81×14.5×9.5	1	6	13/15
R1261	30"/750mm	95×14.5×9.5	1	6	14/16
R1262	36"/900mm	110×14.5×9.5	1	6	15/17
R1263	42"/1050mm	126×14.5×9.5	1	6	17/19
R1264	48"/1200mm	141×14.5×9.5	1	6	18/20
R1265	54"/1350mm	156×14.5×9.5	1	6	20/22
R1266	66"/1650mm	186×14.5×9.5	1	6	22/24

### T型夹 T Shape Clamp

- ® 夹块铸造，钢板优质碳钢冷拉，丝杆双头T型螺纹，调节能力强。
- Made of high-quality carbon steel, and the lead screw with T-shaped thread, easy adjustment.



Item Code	Size	Measurement (cm)	PCS	PCS	Kg
R1270	42"/1050mm	131×17×10	1	4	17/19
R1271	48"/1200mm	146×17×10	1	4	18/20
R1272	54"/1350mm	161×17×10	1	4	20/22
R1273	66"/1650mm	192×17×10	1	4	22/24
R1274	78"/1950mm	223×17×10	1	4	18/20



## 水泵钳 Water Pump Pliers

- ® 采用优质高碳钢精工锻造，坚固耐用。  
表面电镀处理，防锈防腐蚀。  
头部可调节夹持范围。防滑双色沾塑手柄设计。

Made of high-quality high-carbon steel precision forged, strong and durable;  
Surface plating treatment, anti-rust and anti-corrosion;  
The head can adjust the clamping range; The handle is made of two-color dipped plastic treatment.

Item Code	Size	Measurement (cm)	PCS	PCS	Kg
R3045	8"/200mm	61×26.5×21	6	60	16/17
R3046	10"/250mm	53×33.5×21.5	6	48	18/19
R3047	12"/300mm	54×37×21.5	6	48	19/20



## 水泵钳 Water Pump Pliers

- ® 采用优质高碳钢精工锻造，坚固耐用。  
表面喷砂处理，防锈防腐蚀。  
头部可调节夹持范围。防滑双色沾塑手柄设计。

Made of high-quality high-carbon steel precision forged, strong and durable;  
Sandblasted surface treatment, anti-rust and anti-corrosion;  
The head can adjust the clamping range; The handle is made of two-color dipped plastic treatment.

Item Code	Size	Measurement (cm)	PCS	PCS	Kg
R3052	8"/200mm	61×26.5×19	6	60	13.8/14.8
R3053	10"/250mm	53×33.5×21.5	6	48	19.2/20.2
R3054	12"/300mm	54×37×21.5	6	48	25.6/26.6



## 水泵钳 Water Pump Pliers

- ® 采用优质高碳钢精工锻造，坚固耐用。  
表面喷砂处理，防锈防腐蚀。  
头部可调节夹持范围。防滑双色手柄设计。

Made of high-quality high-carbon steel precision forged, strong and durable;  
Sandblasted surface treatment, anti-rust and anti-corrosion;  
The head can adjust the clamping range; Non-slip two-color handle design.

Item Code	Size	Measurement (cm)	PCS	PCS	Kg
R3037	8"/200mm	61×26.5×19	6	60	14.4/15.4
R3038	10"/250mm	53×33.5×21.5	6	48	20.2/21.2
R3039	12"/300mm	54×37×21.5	6	48	27.3/28.3



## 龙骨钳 Keel Forceps

- ® 钳体采用优质高碳钢精密压铸，坚固耐用。  
冲头采用特殊合金钢材锻造，硬度高达61HRC。  
用于固定铝合金和钢结构骨架，快速、省力。

The keel clamp pliers body is made of high-quality high-carbon steel, which is sturdy and durable;  
The punch is forged with alloy steel, and the hardness is 61HRC;  
It is mainly used to fix aluminum alloy and steel structure skeleton, convenient and labor-saving.

Item Code	Size	Measurement (cm)	PCS	PCS	Kg
R3175	12"/300mm	42×35×26	6	30	25.6/26.6



## 龙骨钳 Keel Forceps

- ® 钳体采用优质高碳钢精密压铸，坚固耐用。  
冲头采用特殊合金钢材锻造，硬度高达61HRC。  
用于固定铝合金和钢结构骨架，快速、省力。

The keel clamp pliers body is made of high-quality high-carbon steel, which is sturdy and durable;  
The punch is forged with alloy steel, and the hardness is 61HRC;  
It is mainly used to fix aluminum alloy and steel structure skeleton, convenient and labor-saving.

Item Code	Size	Measurement (cm)	PCS	PCS	Kg
R3178	12"/300mm	42×35×26	6	36	26.2/27.2



## 龙骨钳 Keel Forceps

- ® 钳体采用优质高碳钢精密压铸，坚固耐用。  
冲头采用特殊合金钢材锻造，硬度高达61HRC。  
用于固定铝合金和钢结构骨架，快速、省力。

The keel clamp pliers body is made of high-quality high-carbon steel, which is sturdy and durable;  
The punch is forged with alloy steel, and the hardness is 61HRC;  
It is mainly used to fix aluminum alloy and steel structure skeleton, convenient and labor-saving.

Item Code	Size	Measurement (cm)	PCS	PCS	Kg
R3176	12"/300mm	42×35×26	6	36	16.9/17.9







锐意进取 与尔共进

Blank writing area with horizontal dashed lines.

Blank writing area with horizontal dashed lines.

